

AUTOMATE & ELIMINATE THE NEED FOR SWIVEL CHAIR INTEGRATION

Facts, Stats and Key Factors for Successful Process Improvement and Business Transformation

SWIVEL CHAIR DEFINITION

A swivel chair interface, sometimes known as swivel chair integration, is a system for computer input and interaction that requires users to move from one interface to another, sometimes duplicating work.



A swivel chair integration refers to a manual interface where a user reads data from one system and keys it into another, wasting time in the process.



LEGACY



HR



FINANCE



CRM
(Customer Relationship Management)



ECM
(Enterprise Content Management)



DBMSs
(Data Base Management Systems)

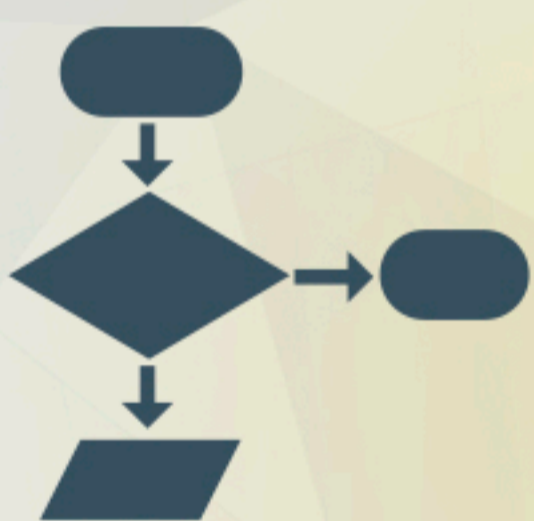


AuraPortal
Advanced Software for Enterprises

Use AuraPortal Helium iBPMS to break down your silos. Wrap, renew and modernize legacy systems and ensure all business processes are accurate, while at the same time eliminating the need for employees to "swivel chair" between multiple systems.



HOW TO START WITH PROCESSES ?



3 STEPS



TOP 5 REASONS WHY YOU SHOULD AUTOMATE YOUR BUSINESS PROCESSES



STREAMLINE COMMUNICATION



ENFORCE ACCOUNTABILITY



MINIMIZE COSTS BY ELIMINATING MANUAL ERRORS



ANALYZE ALL THE DATA, DEVELOP AN INSIGHT



ESTABLISH A CLEAR APPROVAL HIERARCHY

1

2

3

4

5

An automated workflow means a simple, streamlined communication process with only one dashboard.

Your workflow creates an owner for each process step. This equates to information transparency.

Your automated business processes can show you the current state of any item to enable you to minimize errors.

Imagine what you could do with all the data that has been accumulating in every process?

A well-implemented business process workflow tool will ensure that each process has its own specific hierarchy.

BE AN ADAPTIVE ENTERPRISE, ELIMINATE THE NEED FOR SWIVEL CHAIR INTEGRATION WITH AURAPORTAL iBPMS

